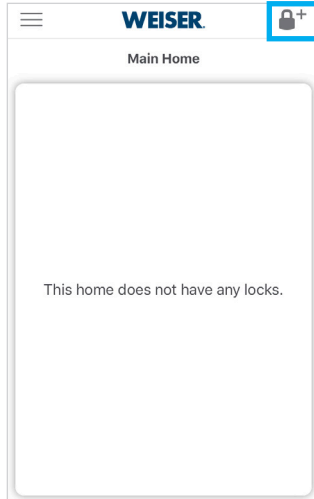
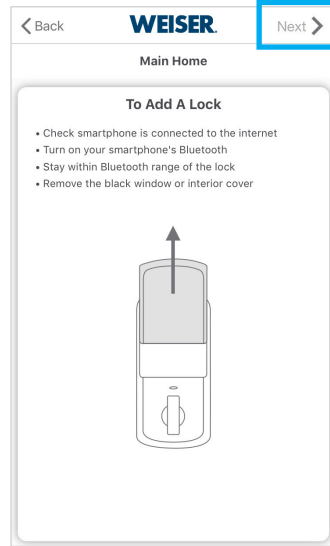


This section is for **Aura locks** only. For **Halo locks**, skip to the next section.

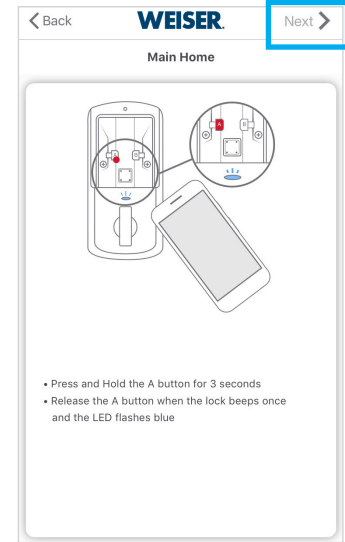
- 1 Tap  in the upper right corner.



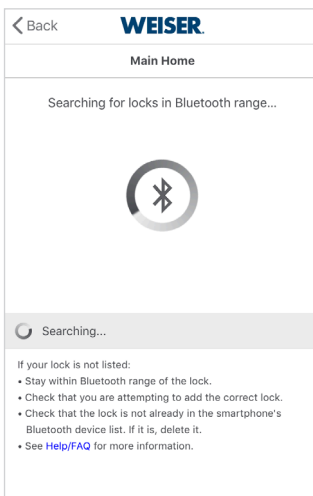
- 2 Follow the on-screen directions, then tap "Next."



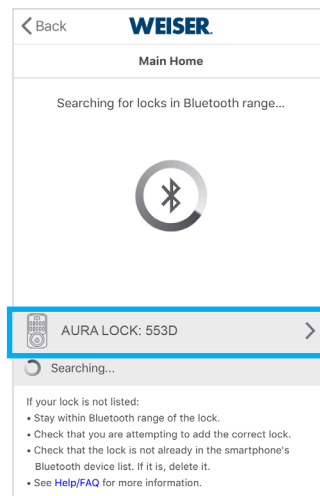
- 3 Follow the on-screen directions, then tap "Next."



- 4 The app will begin searching for the lock.



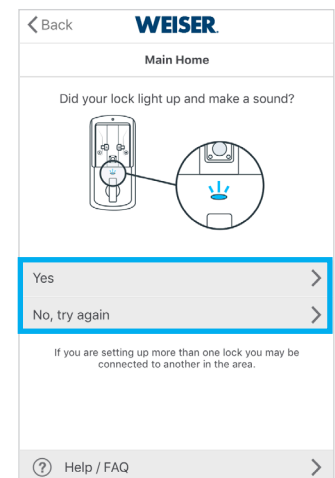
- 5 When the lock appears in the list, tap on the lock to begin the pairing process.



The name may appear as:

- AURA LOCK: #####
- AU: #####

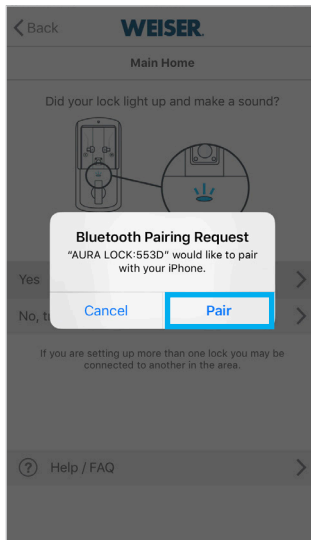
- 6 If pairing is successful, the lock will sound a long beep and the LED will flash blue. If successful, tap "Yes" to continue. If unsuccessful, tap "No, try again" to retry. If the lock LED flashes Red, this lock may already be in the smartphone's Bluetooth device list. Remove the lock from the device list and try again.



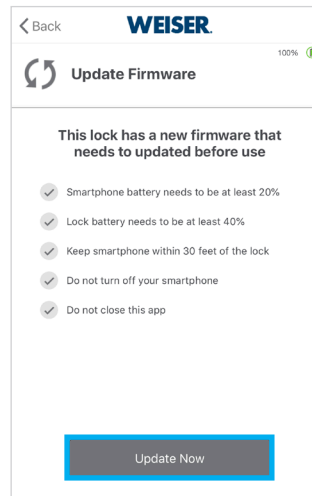
Continue to the next page for additional steps.

7 If your phone displays a Pairing Request message, tap “Pair” to allow the lock to pair with your phone.

Tapping “Cancel” will prevent the lock from pairing with your smartphone and stop the Add Lock process.



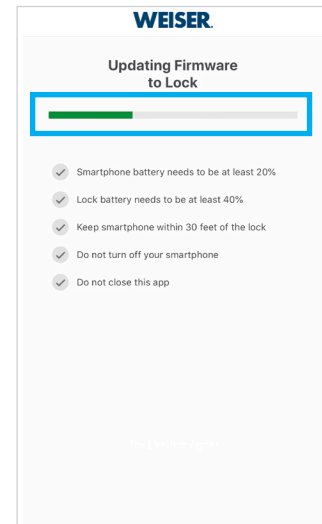
8 Your lock may prompt you to update its firmware. Tap “Update Now” to update the firmware.



To complete the update:

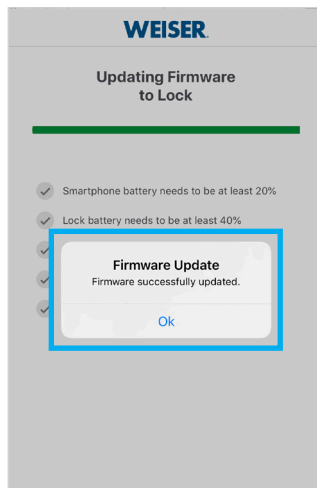
- Keep the phone within Bluetooth range of the lock.
- Keep the phone unlocked with the Weiser app running in the foreground.

9 The firmware download will begin. The green status bar indicates the download progress.

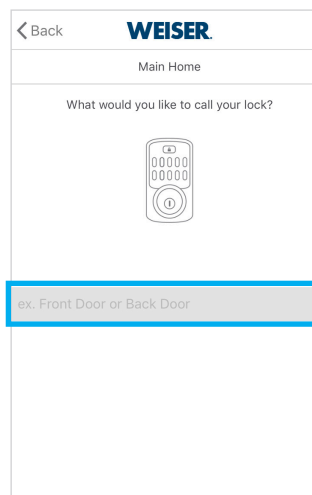


NOTE: The update process may take 7 - 10 minutes.

10 A message will appear signifying that the firmware was successfully updated. Tap “Ok” to continue.



11 Enter a name for your lock.

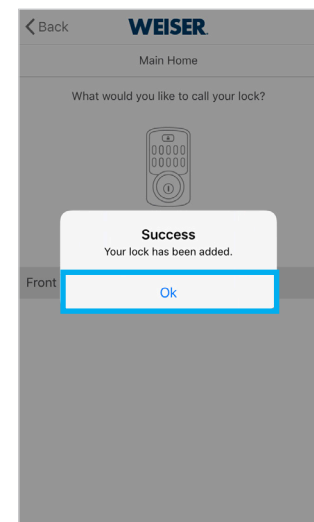


Lock names must be 2 to 20 characters, and:

- Can include letters and numbers
- Cannot include special characters

12 Your lock has been successfully added to your Home.

Next, you'll need to create the first Access Code to complete the process.



Continue to the next page for additional steps.

13 Enter a name for the first Access Code.

Enter an Access Code or tap "Generate Random Code," then tap "Submit."

The screenshot shows the 'Create an Access Code' screen in the WEISER app. At the top, there is a 'Main Home' header and a 'Submit' button. Below the header, the text 'Create an Access Code' is displayed above a person icon. A text input field contains the placeholder text 'ex. John or Dog Sitter'. Below this is a 'Submit' button and a 'Generate Random Code' button. At the bottom, there is a 'Schedule Type' dropdown menu currently set to 'Any Time'.

⚠ Important Information About Access Codes

- Always test each new Access Code after creating it to make sure it works.
- For security reasons, the first 4 digits of each Access Code must be unique. For example, you are unable to program an Access Code **1-2-3-4-5**, as well as an Access Code **1-2-3-4-6**.
- A total of 250 Access Codes can be programmed.

Access Code names must be 2 to 14 characters, and:

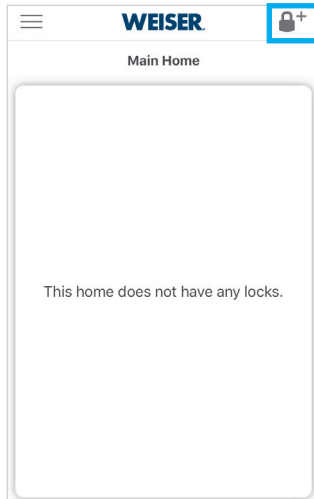
- Can include letters and numbers
- Cannot include special characters

For more information about Schedule Types, see Code Schedule page on www.weiserlock.com

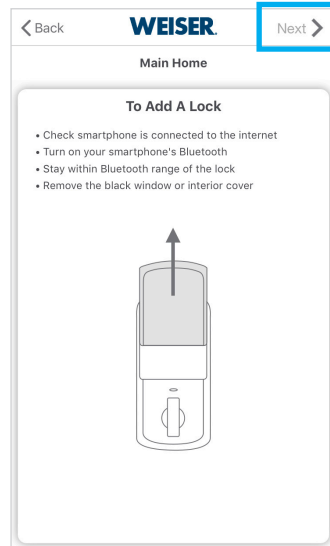
Go to the next page for Adding Your First Halo Lock.

This section is for **Halo locks**. For **Aura locks**, return to the previous section.

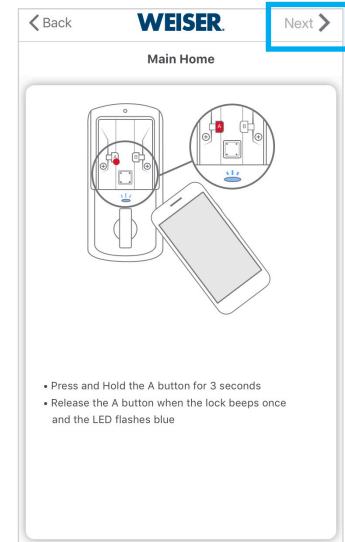
- 1 Tap  in the upper right corner.



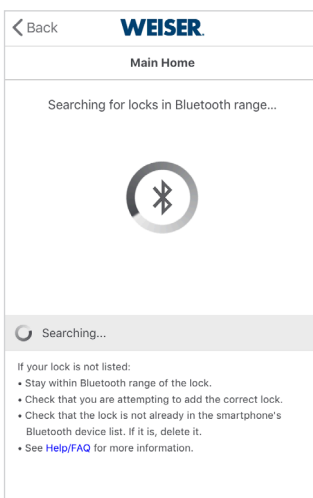
- 2 Follow the on-screen directions, then tap "Next."



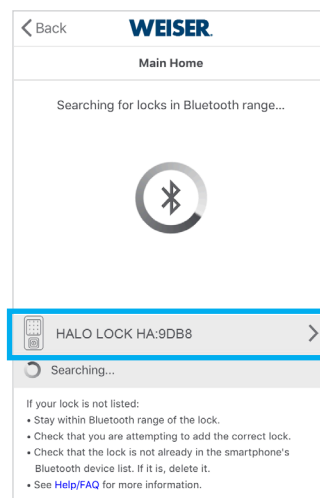
- 3 Follow the on-screen directions, then tap "Next."



- 4 The app will begin searching for the lock.



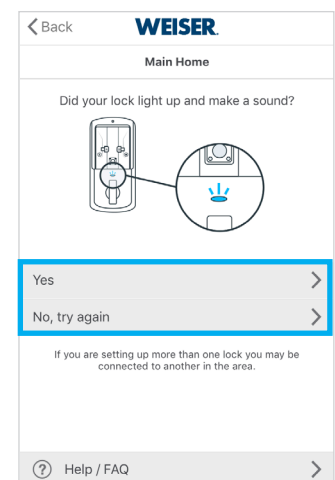
- 5 When the lock appears in the list, tap on the lock to begin the pairing process.



The name may appear as:

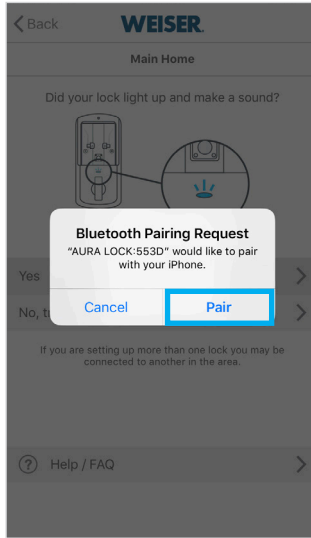
- HALO LOCK: #####
- HA: #####

- 6 If pairing is successful, the lock will sound a long beep and the LED will flash blue. If successful, tap "Yes" to continue. If unsuccessful, tap "No, try again" to retry. If the lock LED flashes Red, this lock may already be in the smartphone's Bluetooth device list. Remove the lock from the device list and try again.

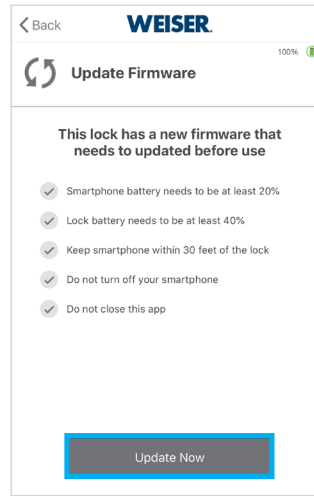


Continue to the next page for additional steps.

- 7** If your phone displays a Pairing Request message, tap “Pair” to allow the lock to pair with your phone.
- Tapping “Cancel” will prevent the lock from pairing with your smartphone and stop the Add Lock process.



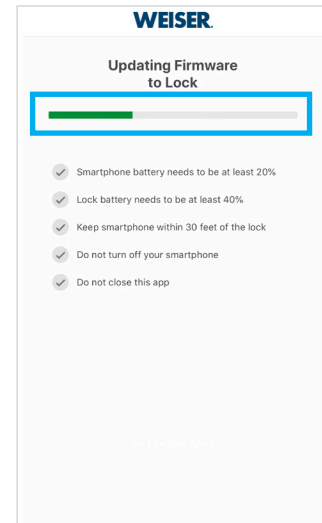
- 8** Your lock may prompt you to update its firmware. Tap “Update Now” to update the firmware.



To complete the update:

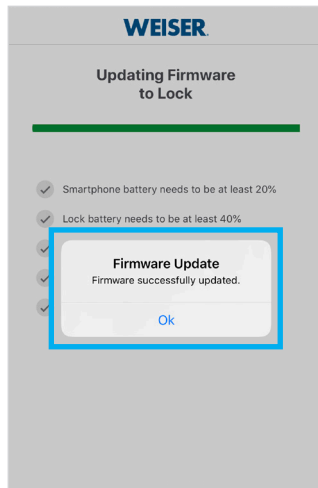
- Keep the phone within Bluetooth range of the lock.
- Keep the phone unlocked with the Weiser app running in the foreground.

- 9** The firmware download will begin. The green status bar indicates the download progress.

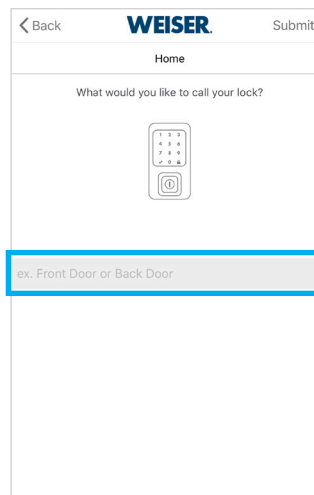


NOTE: The update process may take 7 - 10 minutes.

- 10** A message will appear signifying that the firmware was successfully updated. Tap “Ok” to continue.



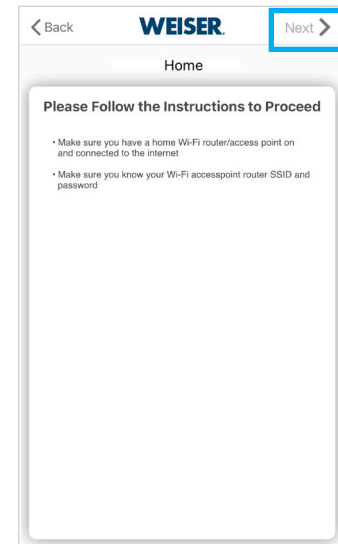
- 11** Enter a name for your lock.



Lock names must be 2 to 20 characters, and:

- Can include letters and numbers
- Cannot include special characters

- 12** Read the instructions that appear on the screen. Tap “Next” to continue.

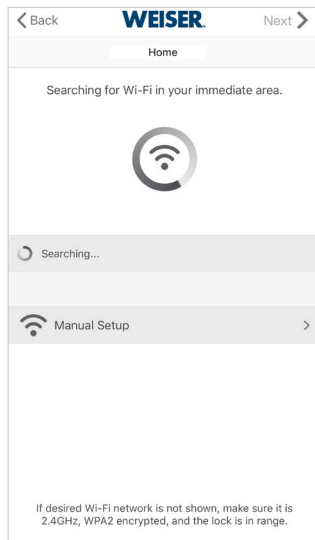


Continue to the next page for additional steps.

- 13** The app will begin searching for available WiFi connections.

Make sure the WiFi network is 2.4GHz and is password protected using WPA2 encryption.

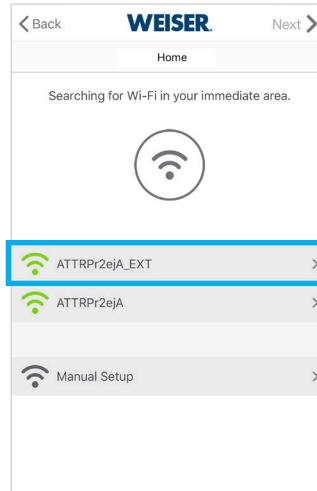
You may need to un-hide your network.



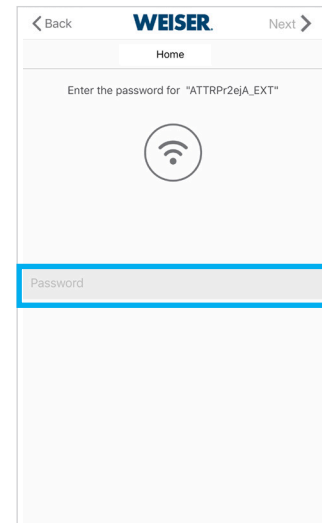
- 14** When your home's WiFi appears in the list, tap on the WiFi name to continue.

If your WiFi doesn't appear, tap "Rescan" to search for it again.

You may also choose "Manual Setup" and enter your Wi-Fi name (SSID) and password.

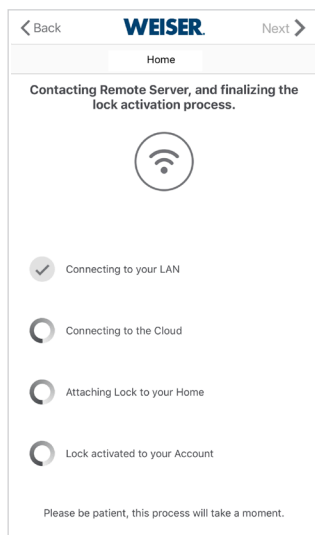


- 15** Enter the password for your WiFi then tap "Submit."



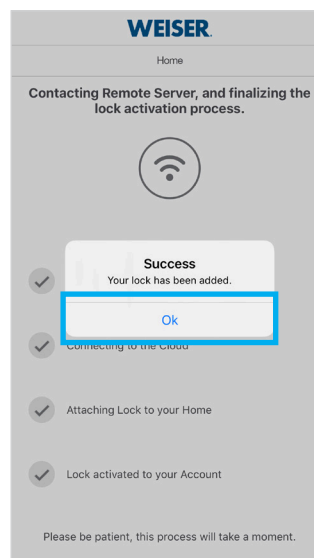
- 16** The lock will contact the remote server to finalize the lock activation process.

This process may take a few minutes.



- 17** A message will appear signifying that the lock activation process was successfully. Tap "Ok" to continue.

You may now re-hide your network, if applicable.



Continue to the next page for additional steps.

18 Enter a name for the first Access Code.

Enter an Access Code or tap "Generate Random Code," then tap "Submit."

The screenshot shows the 'Create an Access Code' screen in the WEISER app. At the top, there is a 'Submit' button. Below it, the text 'Main Home' and 'Create an Access Code' are visible. A user icon is shown. There are three input fields: 'ex. John or Dog Sitter', 'Enter 4-8 Digits', and 'Schedule Type' with a dropdown arrow. A 'Generate Random Code' button is at the bottom. A blue box highlights the 'Submit' button, and another blue box highlights the 'Generate Random Code' button. An arrow points from the 'Generate Random Code' button to the 'Important Information About Access Codes' box.

Important Information About Access Codes

- Always test each new Access Code after creating it to make sure it works.
- For security reasons, the first 4 digits of each Access Code must be unique. For example, you are unable to program an Access Code **1-2-3-4-5**, as well as an Access Code **1-2-3-4-6**.
- A total of 250 Access Codes can be programmed.

Access Code names must be 2 to 14 characters, and:

- Can include letters and numbers
- Cannot include special characters

For more information about Schedule Types, see Code Schedule page on www.weiserlock.com