



ENGLISH

SMARTCODE 915

TOUCHSCREEN ELECTRONIC DEADBOLT

Installation and User Guide

Required tools

4 AA Batteries Ruler Phillips head screwdriver

Additional Tools (depending on application)

Hammer Wood block

Kwikset
1-800-327-5625
www.kwikset.com

Parts in the box

| | | |
|--------------------------|---|--|
| Latch A B | Interior Assembly Traditional Contemporary M M K L | Exterior Touchscreen Traditional Contemporary F F |
| Strike C | Keys E | Fasteners 03809 N P 46780 Q S |
| Adapter Ring D | Mounting Plate G | SmartKey Tool H |
| | | 48654 T 49191 U 64109 V |

*"B" is not included. If needed, please contact Kwikset to order a drive-in latch for your lock.

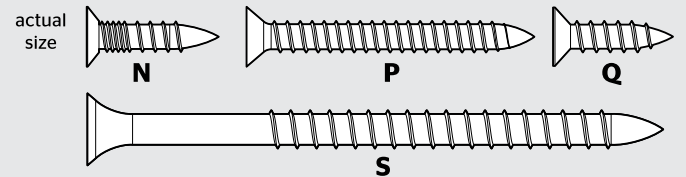
1 Prepare the door and check dimensions

If drilling a new door, use the supplied template and the complete door drilling instructions available at www.kwikset.com/doorprep.

| | | | |
|--|---|--|--|
| <p>A Measure to confirm that the hole in the door is either 2-1/8" (54 mm) or 1-1/2" (38 mm).</p> | <p>B Measure to confirm that the backset is either 2-3/8" or 2-3/4" (60 or 70 mm).</p> | <p>C Measure to confirm that the hole in the door edge is 1" (25 mm).</p> | <p>D Measure to confirm that the door is between 1-3/8" and 2" (35 mm and 51 mm) thick.</p> |
|--|---|--|--|

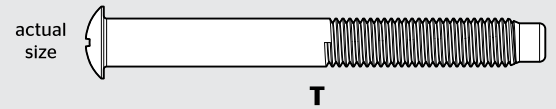
Note: Additional door preparation may be required for doors with 1-1/2" (38 mm) holes. Consult the deadbolt drilling instructions at www.kwikset.com/doorprep.

2 Install the latch and strike



| | | |
|--|--|---|
| <p>A Is the door edge chiseled?</p> <p>YES Use latch "A". If the latch bolt is not already extended, extend the latch bolt as shown.</p> <p>NO Use latch "B" (not included). If the latch bolt is not already extended, extend the latch bolt as shown.</p> | <p>B Hold the latch in front of the door hole, with the latch face flush against the door edge.</p> | <p>D Which latch are you installing?</p> <p>Latch "A" or Latch "B"</p> <p>! Nor P (2x)</p> <p>wood block</p> |
| | <p>C Are the latch holes centered in the door hole?</p> <p>YES No adjustment is required. Proceed to next step.</p> <p>NO Rotate latch face as shown to extend latch.</p> | <p>E Install strike on the door frame.</p> <p>! Make sure the hole in the door frame is drilled a minimum of 1" (25 mm) deep.</p> <p>Longer screws install closest to the door jamb.</p> <p>S (2x) Q (2x) door frame</p> |

3 Install the exterior keypad



A What is the diameter of the hole in the door?

Diameter is 2-1/8" (54 mm)

"D" is required for installation. Install "D" on "F".

Diameter is 1-1/2" (38 mm)

"D" is not needed for installation. Discard "D".

B Locate screws for step 3C and keep them within reach.



C Install exterior keypad and mounting plate.

a

Cable goes underneath latch.

b

Support exterior assembly during mounting plate installation.

Route cable through center hole, then push cable into bottom hole.

c

Keep parallel to edge of door.

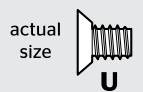
Tighten **T** (2x) screws evenly.

d

Insert key and test latch. If latch does not extend or retract smoothly, adjust screws (T).

Remove key when finished and make sure the latch bolt is fully extended.

4 Install the interior assembly



A Remove battery cover and battery pack from interior assembly.

a

If the turnpiece is pointing down (as shown above), rotate the turnpiece 180° clockwise until you hear it click. You may need to apply some force.

b

c

Incorrect:

If the turnpiece is pointing down (as shown above), rotate the turnpiece 180° clockwise until you hear it click. You may need to apply some force.

d

Do not install batteries until step 5.

B Install interior assembly onto mounting plate.

a

align

Ensure tight cable connection.

b

Lay excess cable flat inside the bottom of the interior housing.

c

d

U (2x)
bottom hole

5 Set locking and unlocking direction

CAUTION: Your lock will not function properly if this step is not completed. This step will teach your lock the orientation of your door and is crucial to lock operation.

A Install 4 AA batteries in battery pack.

K

Ensure correct polarity. For best results, use new, non-rechargeable Alkaline batteries only.

B Make sure the door is open, and insert the battery pack.

K

C After a few seconds, the latch bolt will retract and extend on its own to learn the orientation of the door. This is called the **door handing process**, and it is crucial to lock operation.

Once the door handing process is complete, the touchscreen will indicate success or failure:

Success:
flashing checkmark symbol and single column of digits

Failure:
flashing "X" pattern

D If the touchscreen indicates a failure, attempt this procedure again.

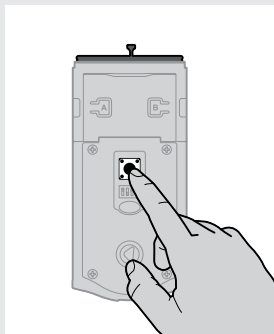
If the door handing process is still unsuccessful after a second attempt, see the Manual Door Handing section on page 4.

6 Add user codes (16 max)

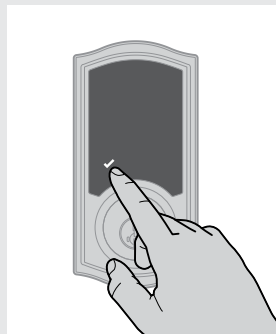
Programming Timeout

During programming, if the screen is not pressed for 20 seconds, the system will time out (indicated by three beeps and the "X" pattern flashing three times), and you will need to restart the procedure.

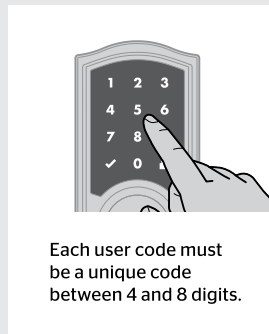
- A** Make sure the door is open. Press the Program button once.



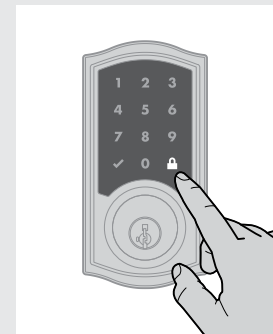
- B** Press checkmark symbol once.



- C** Enter user code. A total of 16 user codes may be programmed.

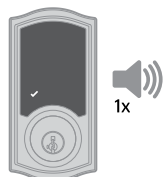


- D** Press lock symbol once.



- E** What digits and sounds did the lock produce?

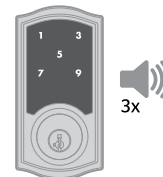
Checkmark symbol with one beep



Programming was successful.

or

"X" pattern with three beeps



Programming was unsuccessful.

Make sure the user code is not a duplicate and that it is between 4 and 8 digits during your next attempt.

Make sure the lock has room for an additional code. If all user code positions are filled, delete a code to make room for this one.

*Beeping sound will only be heard if switch #3 (on the lock interior) is in the on position. See "Switches and Status LED Colors" on page 4.

Mastercode

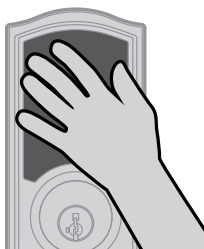
For enhanced security, a mastercode may be used when adding and deleting user codes. For more information about the mastercode, download the Programming and Troubleshooting Guide on the SmartCode 915 page at www.kwikset.com.

7 Test the lock (review normal operation)

Confirm that the code(s) added in previous step can unlock the door.

Activating the Screen

Touch screen with palm or back of hand until digits illuminate.



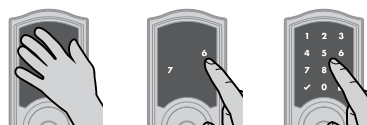
Locking the Door

1. Activate the screen.
 2. Press Lock symbol.
- Note: If no user codes are programmed, the door cannot be locked via touchscreen.



Unlocking the Door

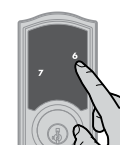
1. Activate the screen.
2. If SecureScreen™ is enabled, touch the random digits that appear.
3. Enter user code.



If you press the wrong digit while entering a user code, you can press the Lock symbol once to clear the digits entered previously and immediately restart the code entry process.

SecureScreen™

SecureScreen is an added-security feature that displays random digits before you enter a user code to unlock the door. This feature ensures that there are fingerprints on all digits so that codes cannot be identified by examining the touchscreen for fingerprints.



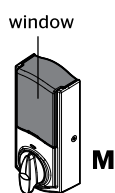
If desired, this feature can be disabled by turning switch #4 to the off position. See "Switches" on page 4.

8 Install the interior cover

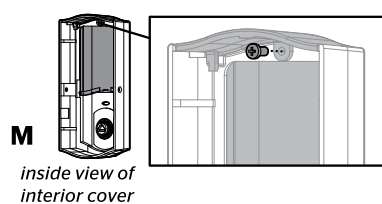
actual size 

Important Information about the interior cover

The window on the interior cover is locked by default to prevent someone from tampering with your lock's settings.



For easy access to the battery pack, unlock the window by removing the security screw.



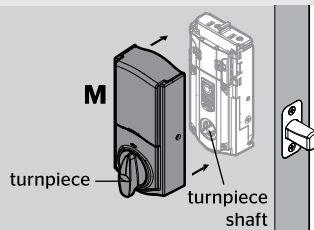
You can now slide up the window for more convenient access to the programming buttons and the battery pack while the cover is installed.



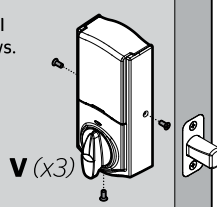
Cover Installation

- a** Install cover.

Note: You may need to rotate the turnpiece to align with the turnpiece shaft.



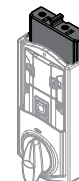
- b** Install screws.



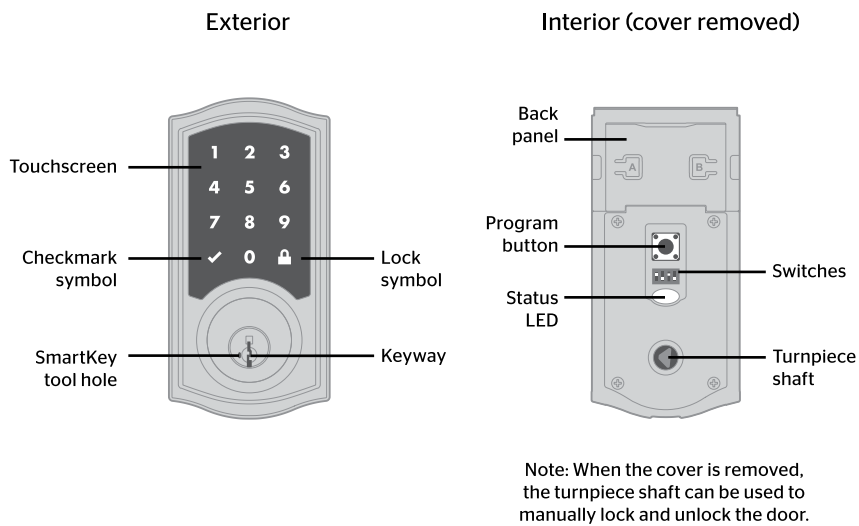
Battery Pack Access

If the window is unlocked, slide up the window to access the battery pack.

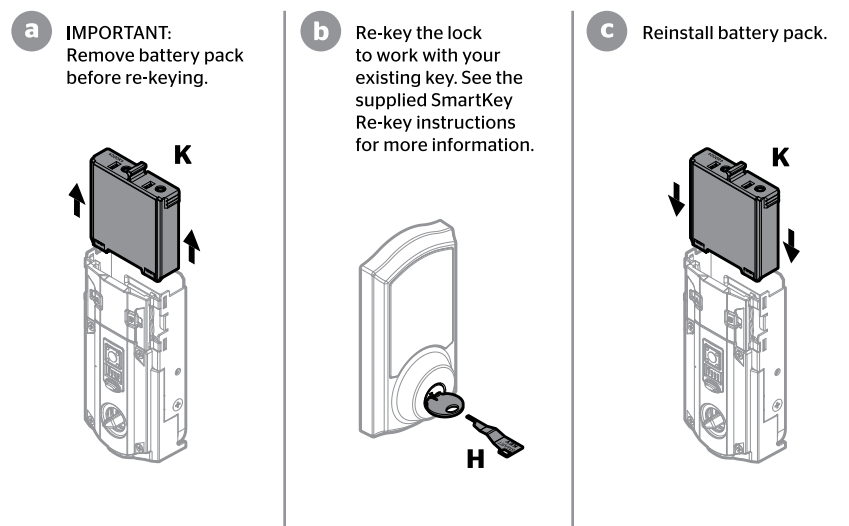
If the window is locked, remove the interior cover and screws to access the battery pack.



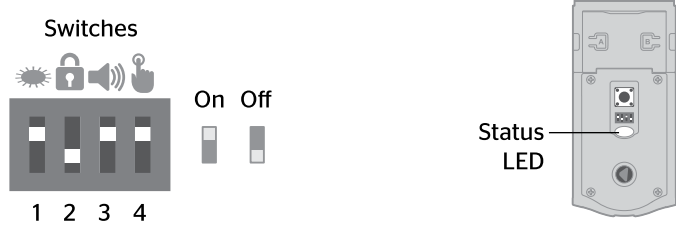
SmartCode at a Glance



Re-key the lock (if needed)



Switches and Status LED Colors



| Switch | Function | Color | Lock Status |
|--------|--|----------------|-------------|
| 1 | Door lock status LED blinks every 6 seconds | Blinking green | Unlocked |
| 2 | Lock automatically re-locks door 30 seconds after unlocking. Disabled if no codes are programmed. | Blinking amber | Locked |
| 3 | Audio | Blinking red | Low battery |
| 4 | SecureScreen feature displays random digits to be pressed before entering user code. This added-security feature ensures that there are fingerprints on all digits so that codes cannot be identified by examining the touchscreen for fingerprints. | | |

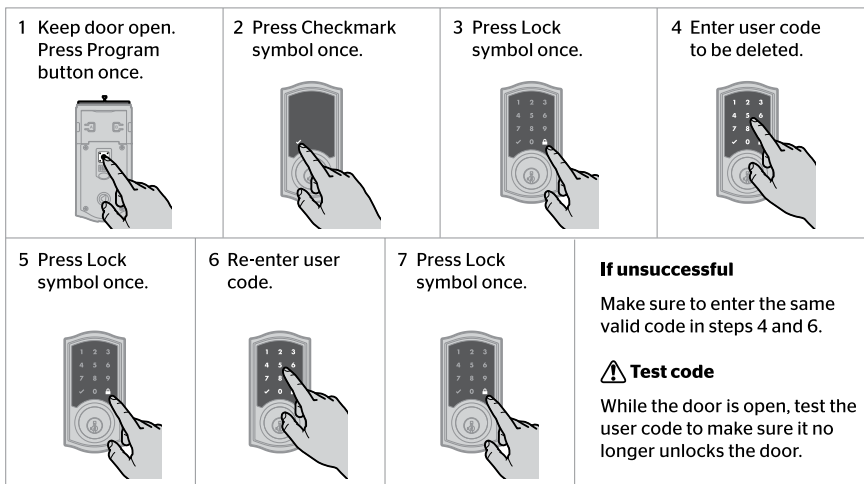
System Alerts

| Display | Alert | Reason | Solution |
|---------|--|--|--|
| | "X" pattern flashes one time with one beep* | One incorrect code entered. | Re-enter code. |
| | "X" pattern flashes three times with three beeps*. | No user code programmed. | Program at least one user code. |
| | | Programming timeout after 20 seconds. | Attempt programming procedure again. |
| | "X" pattern flashes 15 times with 15 beeps* | Three incorrect codes entered within one minute. | Re-enter code after 60 second touchscreen lockout. |
| | | Checkmark and lock symbols flash simultaneously five times with long continuous beep*. | Low battery. |
| | Checkmark and lock symbols alternate flashing five times with long continuous beep*. | Door jammed while attempting to lock. | Manually re-lock door. If needed, reposition strike. |
| | | N/A | Lock beeps continuously. |

*Beeping sound will only be heard if switch #3 is on.

Deleting a single user code

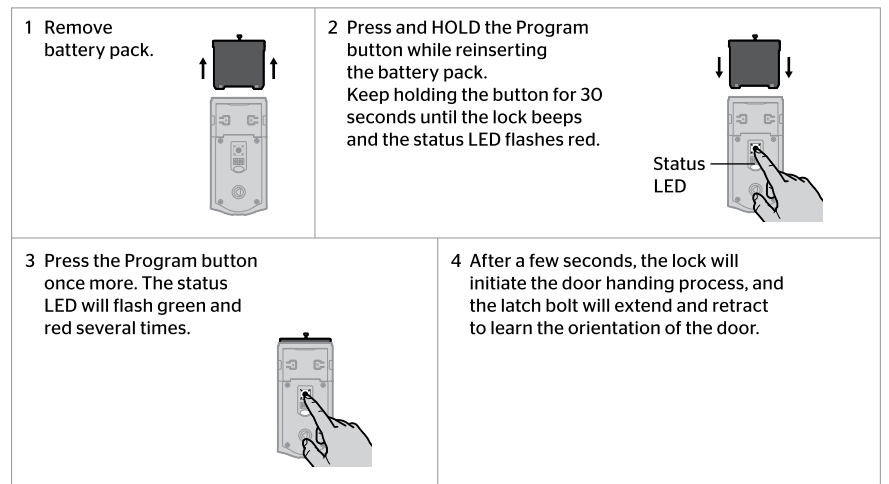
Note: All codes may be deleted at once if the mastercode is enabled. For more information about the mastercode, consult the online Programming and Troubleshooting Guide.



If the screen is not pressed for 20 seconds, the system will time out, and you will need to restart the procedure.

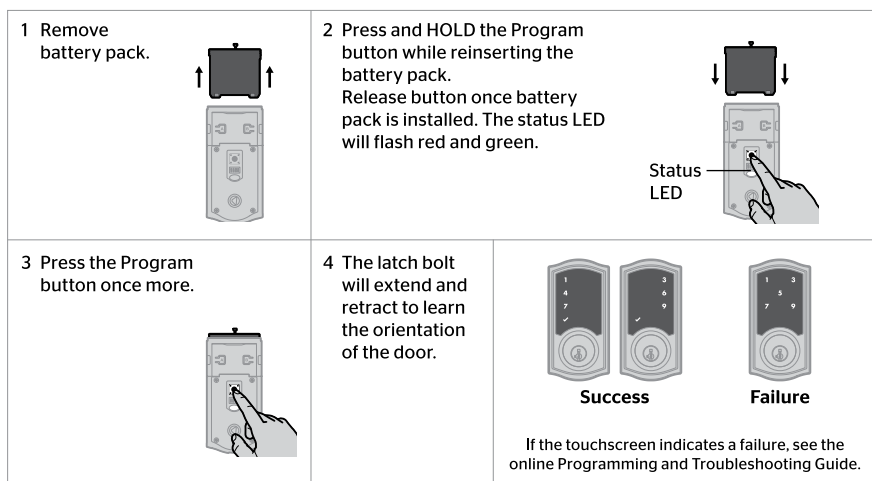
Factory Reset

A factory reset will delete all codes associated with the lock.



Manual Door Handing

If needed, the door handing process can be initiated manually. This is useful if the lock is being moved to a different door.



Important Safeguards

1. Read all instructions in their entirety.
2. Familiarize yourself with all warning and caution statements.
3. Remind all family members of safety precautions.
4. Protect your user codes and mastercode.
5. Dispose of used batteries according to local laws and regulations.

⚠ CAUTION: Prevent unauthorized entry. Since anyone with access to the back panel can change the user codes, you must restrict access to the back panel and routinely check the user codes to ensure they have not been altered without your knowledge. The use of a mastercode can help protect your system's settings.

⚠ WARNING: This Manufacturer advises that no lock can provide complete security by itself. This lock may be defeated by forcible or technical means, or evaded by entry elsewhere on the property. No lock can substitute for caution, awareness of your environment, and common sense. Builder's hardware is available in multiple performance grades to suit the application. In order to enhance security and reduce risk, you should consult a qualified locksmith or other security professional.